

MATHIAS SHADOWSKY

OURDISSION

LA VOIX DE LA LUMIÈRE FROIDE DANS UNE BRUME BRUILLANTE ET VIVANTE

FOR FLUTES

REMARQUES

Ourdission II est la transposition d'Ourdission en $\frac{1}{2}$ de ton : $\# \frac{1}{8} \quad \# \frac{1}{4} \quad \# \frac{3}{8} \quad \# \frac{1}{2} \quad \# \frac{5}{8} \quad \# \frac{3}{4} \quad \# \frac{7}{8}$.

Ourdission utilise 3 flûtes : G.F. grande flûte : flûte basse en do ou contrebasse en sol ou octobasse en do

F flûte en do ou en sol alto

P.F. petite flûte en do ou en sol

les flèches \uparrow et \downarrow associées à une altération ou non signifie un peu plus haut, un peu plus bas.

la deuxième partie, est la partie vocale dont les notes sont carrées, les notes triangulaires signifient le souffle que vous pouvez transposer suivant votre tessiture.

W.T. Wide Tone. \sqsubset les lèvres éloignées de l'embouchure, \square normal.

Flatt.G = flatterzung de gorge Flatt.L = flatterzung de langue. Les rectangles verticaux indiquent des multiphoniques, les 3 premiers de la première partie sont accrochés par le glissando.

A la page 6 : progressivement son de trompe = utiliser l'embouchure de la flûte comme une embouchure de trompette

la première partie (page 1) a une atmosphère intérieur de naissance du son, le son de très près, très lent.

la deuxième partie (page 2 et suivante) très rapide et fluide ; chaque petite "mesure" correspond au son le plus court.

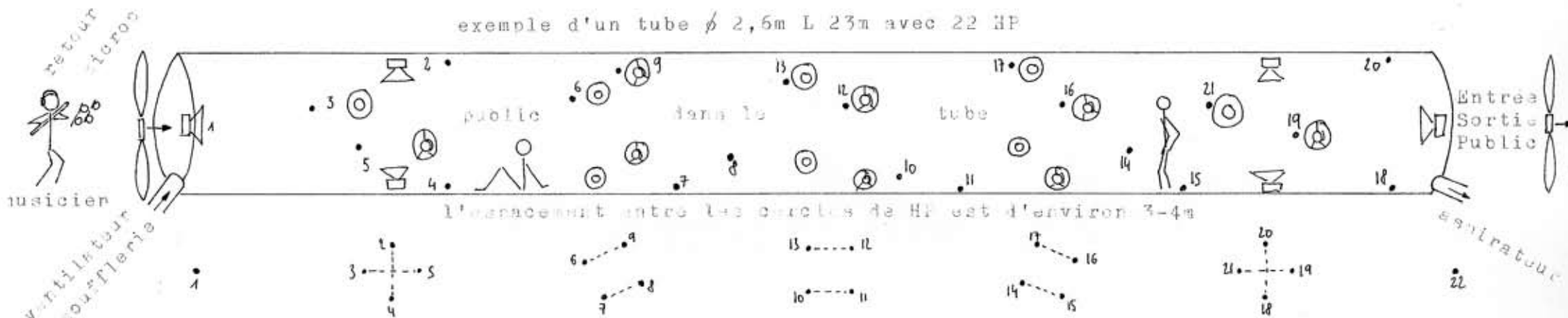
Pour toute réalisation de Ourdission II comme Ourdission - se référer à Ourdission - avec son environnement tubal et son dispositif de spatralication.

MATTHIEU PADOUSKY

Paris 26 janvier 1986.

ENVIRONNEMENT

exemple d'un tube ϕ 2,5m L 23m avec 22 HP



l'espacement entre les cercles de HP est d'environ 3-4m

les types de matériaux du tube sont : Structure Gonflable
Bois la section du tube est carrée
ces différents matériaux peuvent se trouver dans un même tube
Béton Armé
Métaux soudés
Plastiques
Etc...

le tube doit être hermétique
son diamètre est de 3 à 7 mètres sa longueur de 15 mètres à l'infini
la longueur du tube doit avoir un minimum de 5 fois son diamètre
les tubes ne sont pas forcément droits : ils peuvent être courbes
il peut y avoir plusieurs tubes en même temps disposés en étoile
des plate-formes sont installées pour les tubes de sections :

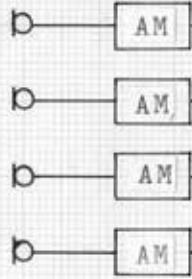
- ϕ 4m, p-f à 1m du sol
- ϕ 5m, p-f à 2m du sol
- ϕ 6m, p-f à 2m du sol
- ϕ 7m, p-f à 3m du sol

les ventilateurs, souffleries, aspirateurs sont bien entendu silencieux



DISPOSITIF

tétraphonie



REVERB

AM



1



AM

2



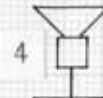
AM

3



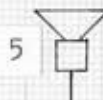
AM

4



AM

5



AM

AM

6



AM

7



AM

8



AM



AM

AM

11



AM

12



AM

13



AM

REVERB

AM



Le computer contrôle les modulateurs d'amplitude et les réverbérations numériques

déphasage

déphasage

Enveloppe Spatiale de Réverbération

Enveloppe Spatiale d'Amplitude

Bass

Treble

Direction constante du son



OUVERTURE II

EVEIL

GF

Crescendo poco a poco al fine

[hu] → [fu] → [fi]

□ → □ souffle saliveux devenant homogène

W.T. W.T. W.T.

gliss.

Flatt.G → Flatt.L

Balayage harmonique &
5 passages multiphoniques

ACC

LA DUREE DE CETTE PARTIE EST EGALE A UN PEU PLUS DE 2 FOIS
LA DUREE DE LA SECONDE PARTIE

F

A LA VITESSE DE LA LUMIERE FLUIDE

PF

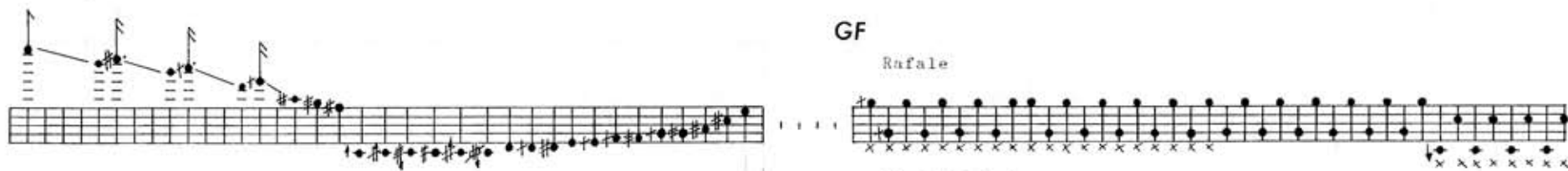
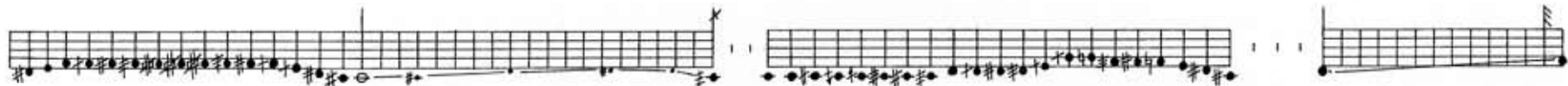
A musical staff with a treble clef and a key signature of one sharp (F#). The staff contains a series of notes with stems pointing downwards. A long horizontal line connects the first measure to the beginning of the **PF** section. The notes in the **PF** section are more widely spaced and include some notes with stems pointing upwards.

A musical staff with a treble clef and a key signature of one sharp (F#). It contains a series of notes with stems pointing downwards, similar to the first staff.

A musical staff with a treble clef and a key signature of one sharp (F#). It contains a series of notes with stems pointing downwards. There are some notes with stems pointing upwards and some notes with 'X' marks above them. The staff ends with a double bar line.

F

A musical staff with a treble clef and a key signature of one sharp (F#). It contains a series of notes with stems pointing downwards. There are some notes with stems pointing upwards and some notes with 'X' marks above them. The staff ends with a double bar line.



GF

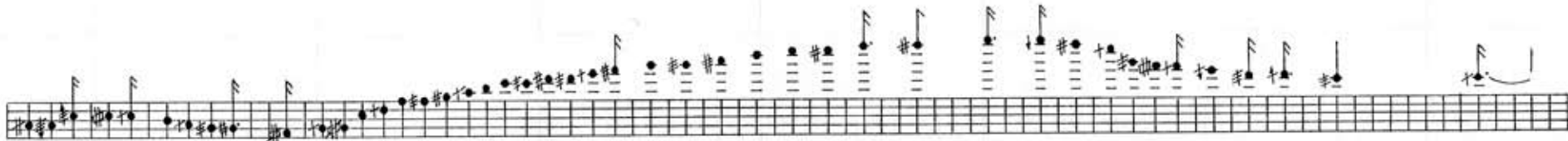
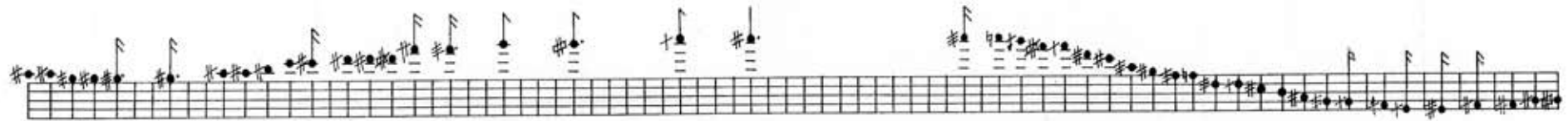
Rafale

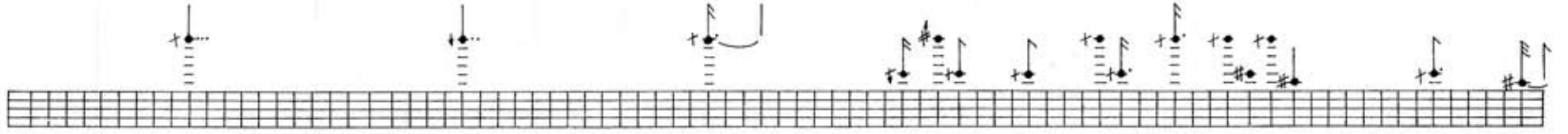
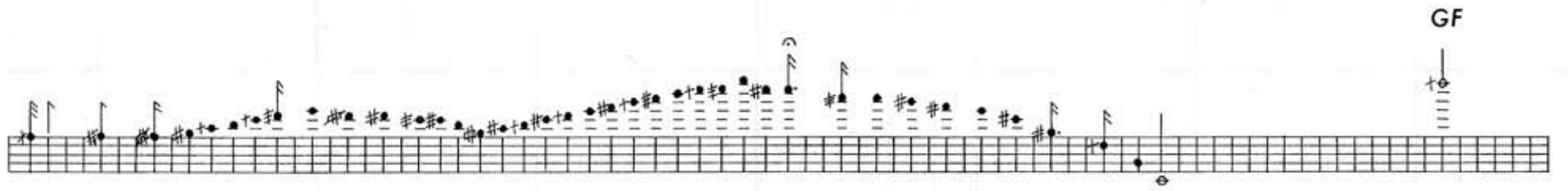
Flatt.L forte



PF







A single musical staff containing a sequence of notes. The notes are mostly quarter notes and half notes, some with slurs. The staff is divided into measures by vertical bar lines.

Progressivement son de trompe, embouchure lipale

A single musical staff containing a sequence of notes, similar to the first staff. It includes quarter notes, half notes, and slurs, indicating a specific musical exercise or technique.

PF

A musical staff with a dense sequence of notes, possibly a tremolo or a fast scale. It includes a double bar line and a fermata. To the right of the staff, there is a small diagram showing a grid with notes placed on it, likely representing a fingering chart or a specific musical structure.



Musical staff with notes and dynamics. The staff contains a sequence of notes, including a sharp sign (#) at the beginning. The dynamics **F** and *Dolce* are indicated above the staff. A specific note with a sharp sign (#) is marked with **F** and *Dolce* above it.

Musical staff with notes and dynamics. The staff contains several notes, including a sharp sign (#) at the beginning. The dynamics **F** and *Dolce* are indicated above the staff.

Musical staff with notes and dynamics. The staff contains several notes, including a sharp sign (#) at the beginning. The dynamics **F** and *Dolce* are indicated above the staff.

Musical staff with notes and dynamics. The staff contains a sequence of notes, including a sharp sign (#) at the beginning. The dynamics **F** and *Dolce* are indicated above the staff.

A musical staff with a grid. Above the staff are several chord diagrams, each consisting of a vertical line with dots and stems indicating fingerings for different strings.

A musical staff with a grid. It contains a sequence of notes with stems and flags, along with various accidentals (sharps, naturals, flats) placed below the notes.

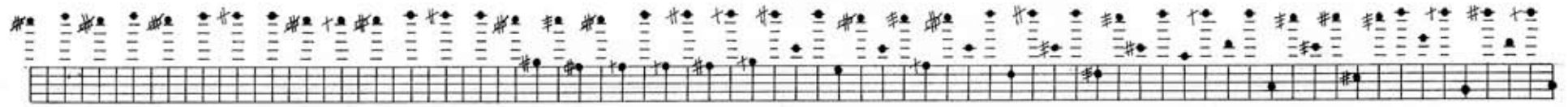
A musical staff with a grid. Above the staff are several chord diagrams, similar to the first staff, showing fingerings for different chords.

A musical staff with a grid. It contains a sequence of notes with stems and flags, along with various accidentals (sharps, naturals, flats) placed below the notes.

A musical staff with a grid. Above the staff are several chord diagrams, showing fingerings for different chords.

A musical staff with a grid. It contains a sequence of notes with stems and flags, along with various accidentals (sharps, naturals, flats) placed below the notes.

Tourbillon



Handwritten musical notation on a five-line staff. The first few notes are marked with vertical dashed lines and a circled '0'. An arrow points from the text "GF" to the second note. The notation includes various note values and stems.

A small handwritten guitar fretboard diagram showing a single note on the first string, first fret, with a circled '0' below it.

Handwritten musical notation on a five-line staff, continuing the piece with various note values and stems.

A small handwritten guitar fretboard diagram showing a single note on the first string, first fret, with a circled '0' below it.

A small handwritten guitar fretboard diagram showing a single note on the first string, first fret, with a circled '0' below it.

Handwritten musical notation on a five-line staff, continuing the piece with various note values and stems.

A small handwritten guitar fretboard diagram showing a single note on the first string, first fret, with a circled '0' below it.

A small handwritten guitar fretboard diagram showing a single note on the first string, first fret, with a circled '0' below it.

A small handwritten guitar fretboard diagram showing a single note on the first string, first fret, with a circled '0' below it.

The top staff is a grand staff with a treble and bass clef. It contains a single note on the middle line of the treble clef. The note is marked with an accent (>) and a slur. There are also some markings that look like 'm' or 'n' above the note. The bottom staff consists of five lines with vertical stems and downward-pointing triangles. Below the second stem is a square box containing the letter 'a', and below the fourth stem is a square box containing the letter 'o'.

Le souffle envahit l'espace très progressivement

A small grid diagram consisting of a 4x4 grid of squares. Above the rightmost column is a key signature symbol (a sharp sign). Below the bottom-right square is an accent mark (>).

A musical staff with five lines. It contains three vertical stems, each with a downward-pointing triangle at its base.